

2024 national curriculum tests

Key stage 2

Mathematics

Paper 2: reasoning

First name						
Middle name						
Last name						
Date of birth	Day		Month		Year	
School name						
DfE number						



[BLANK PAGE]

Please do not write on this page.



Instructions

You **must not** use a calculator to answer any questions in this test.

Questions and answers

You have **40 minutes** to complete this test.

Follow the instructions for each question.

Work as quickly and as carefully as you can.

If you need to do working out, you can use the space around the question.

Do not write over any barcodes.

Some questions have a method box like this:

The diagram shows a large grid representing a method box. On the left side of the grid, there is a rounded rectangular label that says "Show your method". In the bottom right corner of the grid, there is a smaller, empty rectangular box, likely representing a space for an answer.

For these questions, you may get a mark for showing your method.

If you cannot do a question, **go on to the next one.**

You can come back to it later, if you have time.

If you finish before the end, **go back and check your work.**

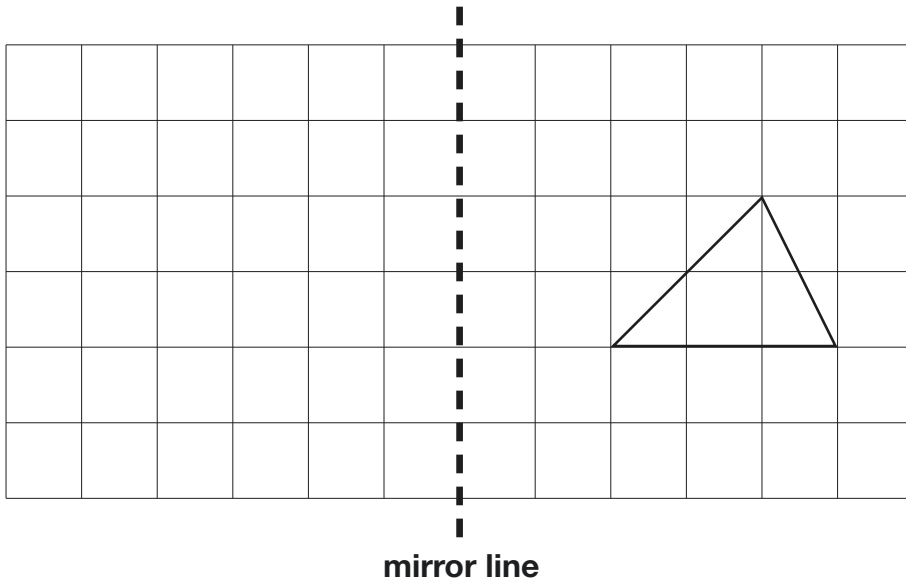
Marks

The number under each line at the side of the page tells you the number of marks available for each question.



1

Here is a triangle on a grid.



Draw the reflection of the triangle in the mirror line.

Use a ruler.

1 mark



2

This table shows the cost of fruit at a school cafeteria.

Fruit	Cost for one
banana	12p
plum	23p
apple	32p
pear	38p

Amir buys two pieces of fruit.

He pays with a £2 coin.

He gets £1.50 change.

Tick the **two** pieces of fruit that Amir buys.

Tick **two**.

banana

plum

apple

pear

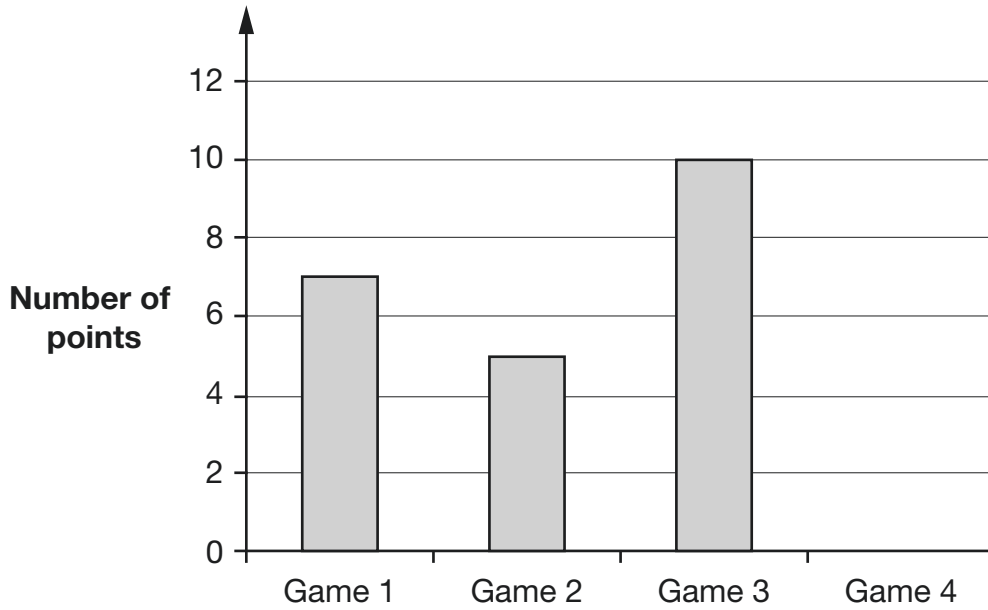
1 mark



3

Layla plays basketball.

This graph shows how many points she scored in her first 3 games.



1 mark

After 4 games, Layla had scored a total of 25 points.

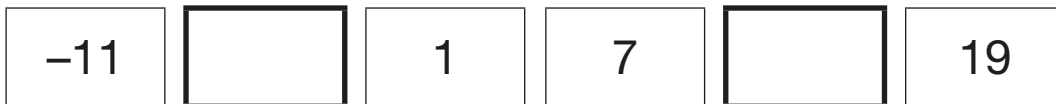
Complete the graph.

Use a ruler.

4

The numbers in this sequence increase by the same amount each time.

Write the missing numbers.



1 mark



5

Write the three missing digits to make this multiplication correct.

$$\begin{array}{r}
 \square 5 \square \\
 \times \quad \quad 3 \\
 \hline
 7 \square 2
 \end{array}$$

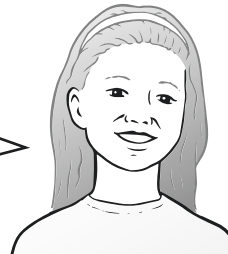
1 mark

6

Olivia is thinking of a number.

My number

- is greater than 236
- is less than 245
- has a 3 in the tens' place
- is an even number



What number is Olivia thinking of?

1 mark



7

A box holds 40 packets of envelopes.

Each packet holds 25 envelopes.

How many **envelopes** does the box hold?

1 mark

8

Write a **whole number** in each box to make the statements correct.

One has been done for you.

rounded to the nearest **ten** is 20

rounded to the nearest **thousand** is 4,000

rounded to the nearest **ten thousand** is 820,000

1 mark



9

$$4 \div 10$$

$$40 \div 10$$

$$4 \div 100$$

$$40 \div 100$$

Two of these calculations have the same answer.

Write this answer as a **decimal**.

1 mark



10

Circle the two **prime** numbers that have a difference of 2

15 17 19 21 23 25

1 mark

11

This table shows the number of children and adults at a childcare centre.

Complete the table to make it correct.

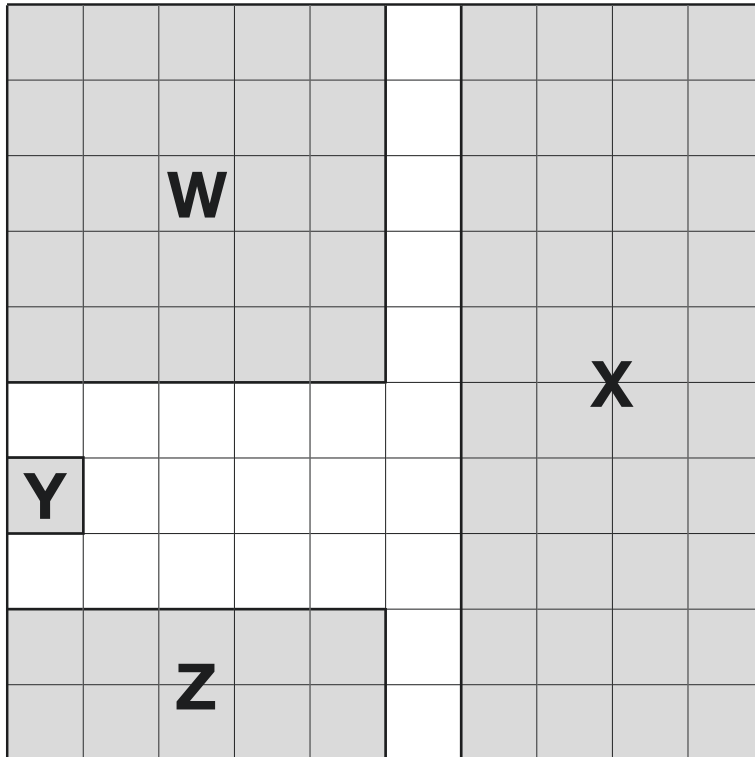
The first row has been done for you.

Age in years	Number of children	Number of adults	Number of children per adult
1 and under	12	4	3
2 or 3	20		4
4 or 5		3	8

1 mark

12

Shapes **W**, **X**, **Y** and **Z** cover different fractions of this 10 by 10 square.



Match each shape to the correct fraction.

Shape **W**

$$\frac{1}{100}$$

Shape **X**

$$\frac{1}{4}$$

Shape **Y**

$$\frac{2}{5}$$

Shape **Z**

$$\frac{1}{10}$$

1 mark



13

Match the name of each 3-D shape to its number of vertices.

cube	9
square-based pyramid	8
triangular-based prism	6
octagonal-based pyramid	5

1 mark**14**

A class votes for a captain.

Three-quarters of the class vote for Sam.

The remaining 7 pupils vote for Alex.

How many pupils are in the class?

1 mark

15

Write the missing number to make this **multiplication** correct.

$$3.207 \times 100 = \boxed{} \times 10$$

1 mark

16

Here is a number.

9,658,214

Tick the statements that are **true**.

The digit 5 represents 50,000

The value of the digit 9 is nine hundred thousands.

The digit 6 represents 6 millions.

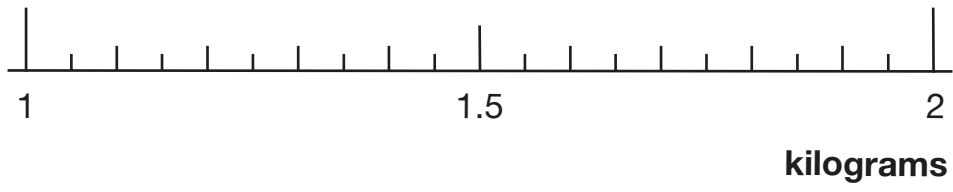
The value of the digit 2 is twenty tens.

2 marks



M 0 0 0 7 0 A 0 1 3 2 4

18 Draw an arrow (\uparrow) on the scale below to show **1350 grams**.



1 mark

19 A hall has 1,250 seats.
 At 7 pm, 880 seats are filled.
 At 8 pm, there are 40 empty seats.

How many seats were filled between 7 pm and 8 pm?

Show your method

seats

2 marks



20

Each day, a school has

- break from 10:15 am to 10:30 am
- lunchtime from 12:40 pm to 1:30 pm.

What is the **total** time the school has for breaks and lunchtime in a 5-day week?

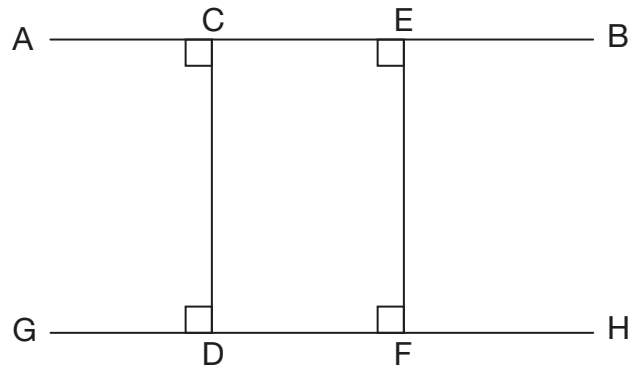
Show your method

	<div style="border: 1px solid black; width: 80%; margin: 0 auto; padding: 5px;"> <div style="display: flex; justify-content: space-around; font-weight: bold;"> hours minutes </div> </div>
--	---

2 marks



21



Tick **all** the correct statements.

AB is parallel to CD

GH is parallel to AB

CD is perpendicular to GH

EF is perpendicular to CD

1 mark



22

This table shows the distance that five friends travel to school each day.

Name	Distance (km)
Amina	1.8
William	2.4
Layla	3.2
Chen	1.6
Dev	4.5

What is the **mean** distance they travel to school each day?

Show your method

2 marks



24

Here are four numbers.

40

60

64

100

Use each number **once** to complete these statements.

is a square number.

is a cube number.

is a common multiple of **4** and **5**is a common factor of **80** and **120**2 marks

25

Write the missing numbers so that $3 \times b - a = 2$

a	b
	2
13	

2 marks

26

Here are 3 translations on a coordinate grid.

Tick the translations that are **four units to the left**.

from (0, 2) to (4, 2)

from (6, 8) to (2, 8)

from (-3, 5) to (-7, 5)

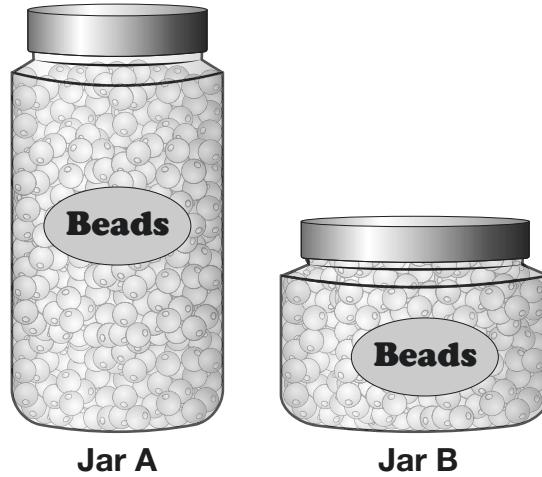
1 mark



27

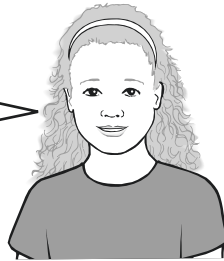
Olivia has two jars of beads.

The number of beads in Jar A is **double** the number of beads in Jar B.



Olivia says,

25% of the number of beads in Jar A is the same as 50% of the number of beads in Jar B.



Explain why Olivia is correct.

1 mark



[END OF TEST]

Please do not write on this page.





Standards
& Testing
Agency

2024 key stage 2 mathematics

Paper 2: reasoning

Print version product code: STA/24/8818/p ISBN: 978-1-83507-012-3

Electronic PDF version product code: STA/24/8818/e ISBN: 978-1-83507-033-8

For more copies

Additional copies of this book are not available during the test window.

They can be downloaded afterwards from

<https://www.gov.uk/government/collections/national-curriculum-assessments-practice-materials>.

© Crown copyright 2024

Re-use of Crown copyright in test materials

With the exception of third-party copyright content, the 2024 key stage 2 test materials are Crown copyright. You may re-use them (not including logos) free of charge in any format or medium in accordance with the terms of the Open Government Licence v3.0 which can be found on the National Archives website and accessed via the following link: www.nationalarchives.gov.uk/doc/open-government-licence. When you use this information under the Open Government Licence v3.0, you should include the following attribution: 'Contains material developed by the Standards and Testing Agency for 2024 national curriculum assessments and licensed under Open Government Licence v3.0' and where possible provide a link to the licence.



Exception – third-party copyright content in test materials

Schools and other educational establishments, as defined in the Copyright Designs and Patents Act 1988 (CDPA), may re-use the test materials in their entirety for teaching purposes: <https://www.gov.uk/guidance/exceptions-to-copyright>. However, if not expressly permitted under the CDPA, you must obtain permission from the relevant copyright owners, listed in the '2024 key stage 2 tests copyright report', for re-use of any third-party copyright content which we have identified in the test materials. Alternatively, you should remove the unlicensed third-party copyright content and/or replace it with appropriately licensed material.

If you have any queries regarding these test materials, contact the national curriculum assessments helpline on 0300 303 3013 or email assessments@education.gov.uk.

